

population profile

Population Growth

Dating back to the 1950s, Rock Hill's population growth has been increasing with periods of faster growth than others. This rate of growth is compared to the average of all the growth rates of sister ring cities (Mooresville, Kannapolis, Concord, Monroe, and Gastonia). The City's population projections are calculated using a constant share method based on the 2010 Census population. It is anticipated that as neighboring communities such as Tega Cay and Fort Mill reach higher build out levels, that Rock Hill will experience greater impacts of Charlotte MSA growth.

4

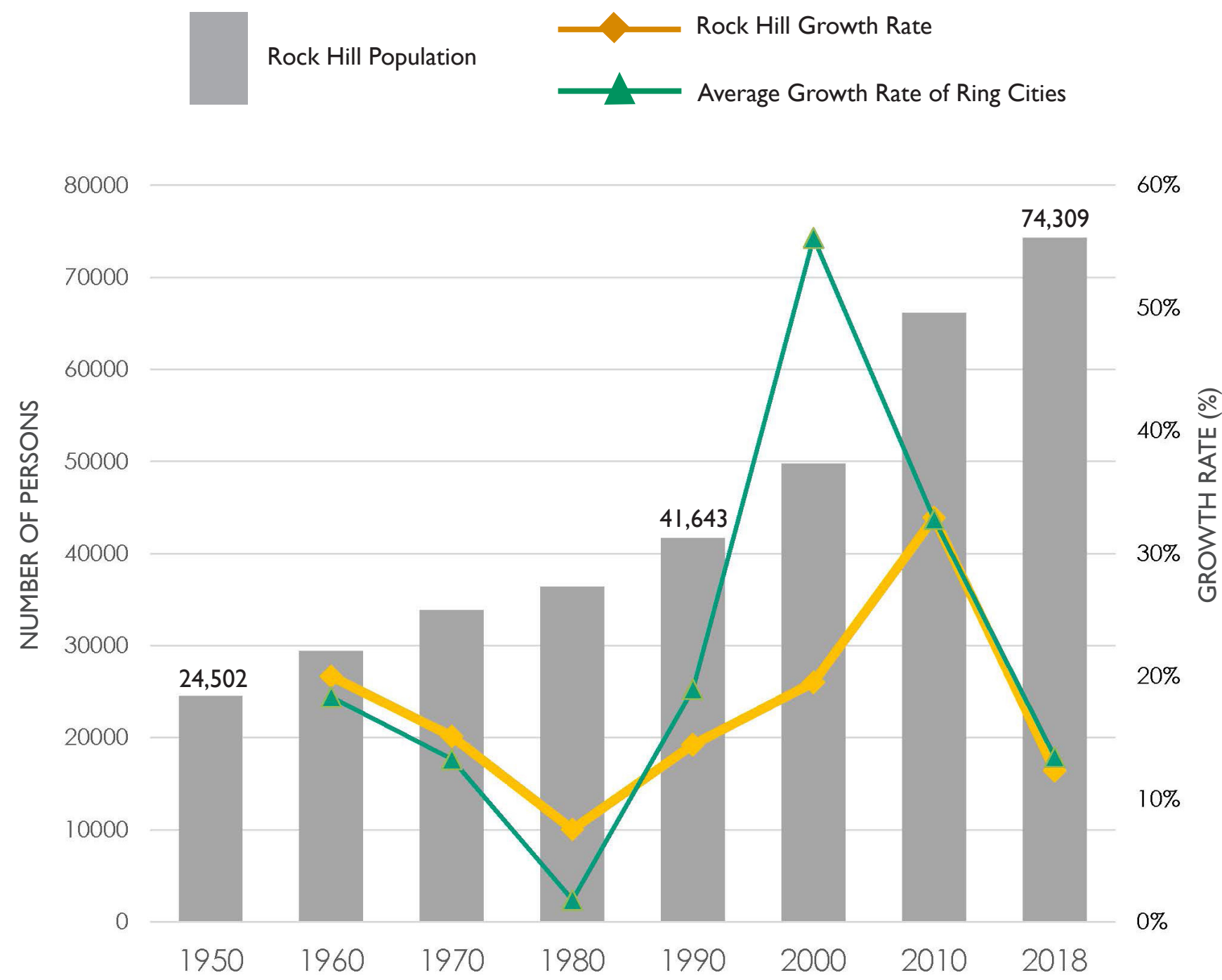
DAY

**ROCK HILL
BREAK IT DOWN**

On average between 2000 and 2018, Rock Hill netted 4 new persons a day (from 49,765 persons in 2000 to 74,309 persons in 2018).

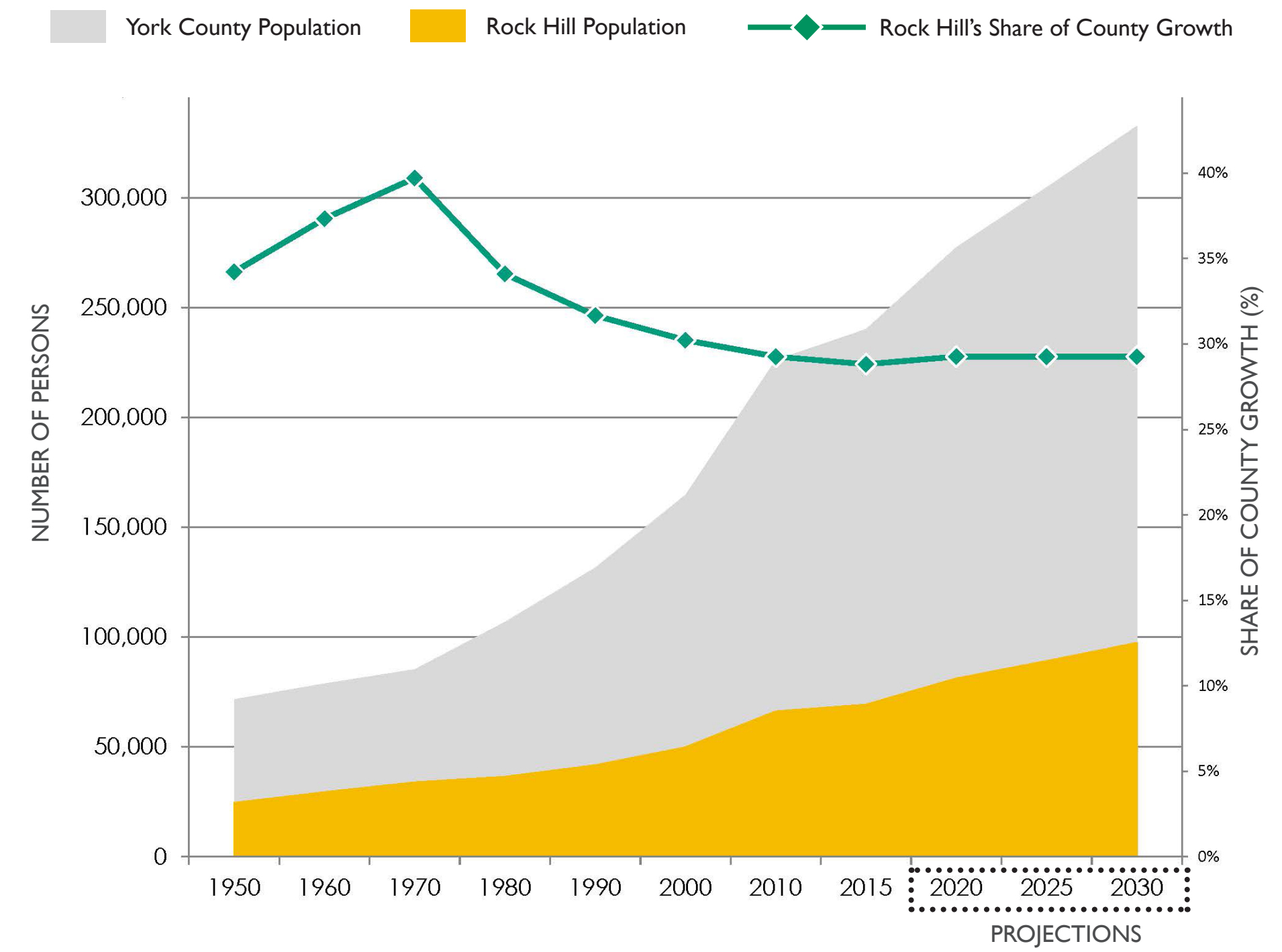
HISTORIC POPULATION GROWTH & RATE

Source: U.S. Census Bureau, ACS 2018 1-Year Estimate



HISTORIC & PROJECTED POPULATION DATA

Source: U.S. Census Bureau, ACS 2011-2015 5-Year Estimate, & South Carolina Revenue & Fiscal Affairs Office Projects; Rock Hill projections are calculated using a constant share method based on SC and York County projections provided by the SC Office of Revenue & Fiscal Affairs.



Regional Growth Comparisons

Incorporated in 1870, the area in and around Rock Hill has a deep history including Native American tribes and early Colonial settlers. Thus as a more mature and larger city of the Charlotte MSA, Rock Hill has experienced more temperate growth rates compared to neighboring communities along the Carolina border like Tega Cay and Fort Mill. Rock Hill has and will continue to be an integral part of the Charlotte economic engine. Rock Hill's population growth is more indicative of Charlotte than the State.

2ND

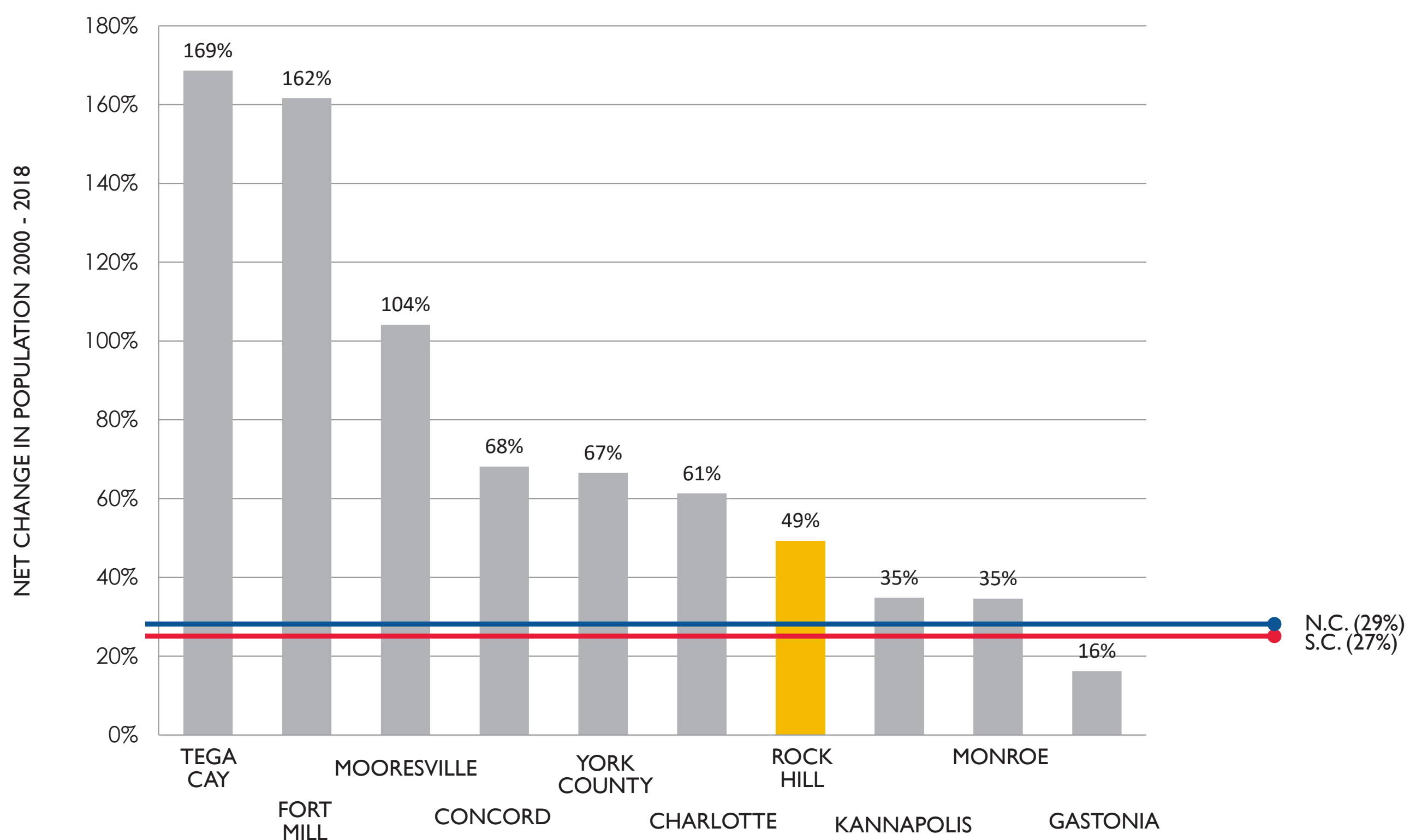
FASTEST GROWING
COUNTY IN S. C.

YORK

From 2000 to 2010, York County was the 2nd fastest growing county among the 10 counties in the Charlotte MSA and the 2nd fastest growing county in South Carolina.

REGIONAL GROWTH RATE COMPARISON [2000-2018]

Source: U.S. Census Bureau, 2000, 2010, ACS 2018 1-Year Estimate



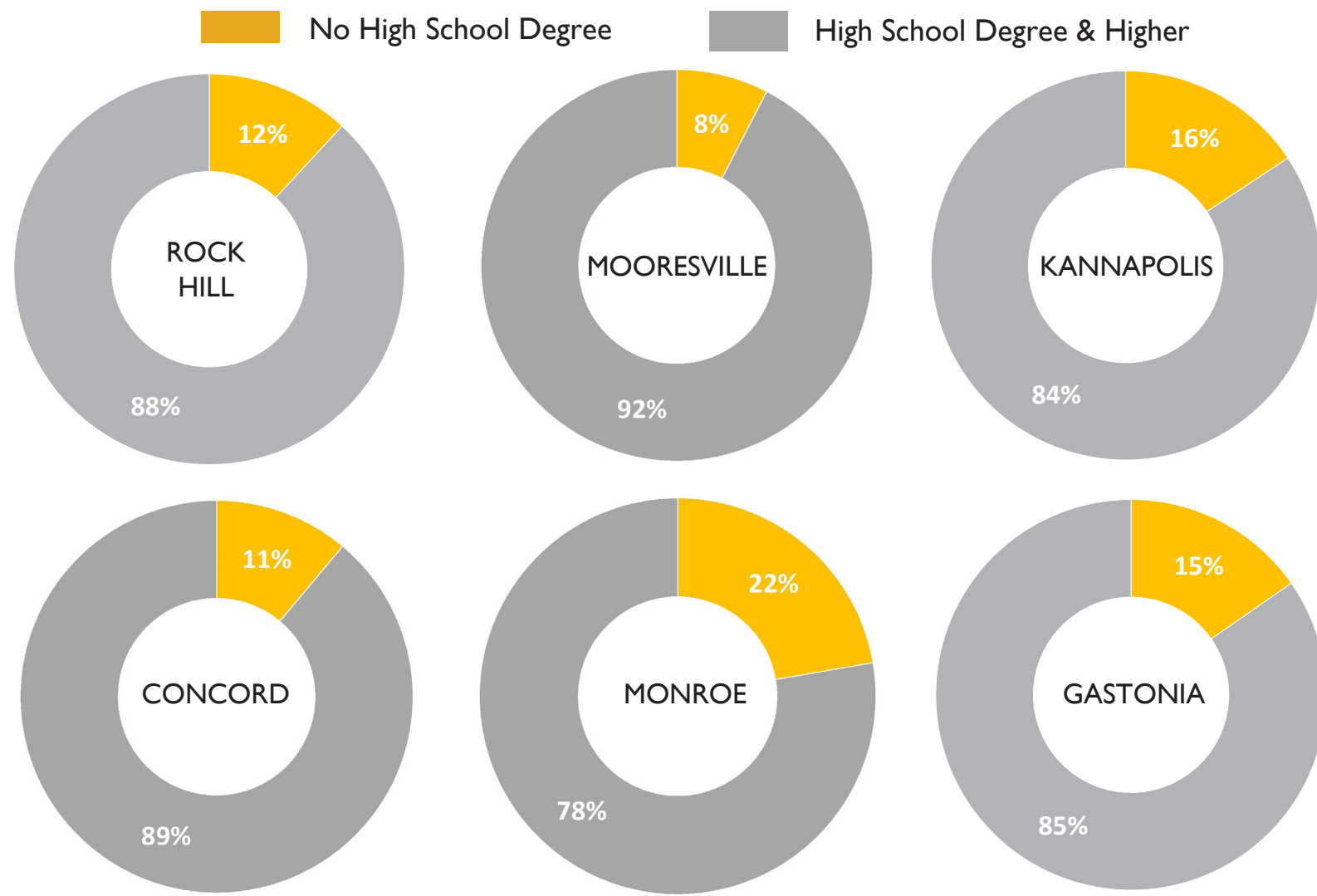
population profile

Education

In 2017, 88% of the Rock Hill population had a high school degree or higher. This is slightly below that of Charlotte and York County (both 89%), but slightly above that of the State and the Nation (both 87%). Rock Hill's strong public and private grade schools as well as higher education facilities support the needs of the City's growing population and keep Rock Hill competitive among other Ring Cities.

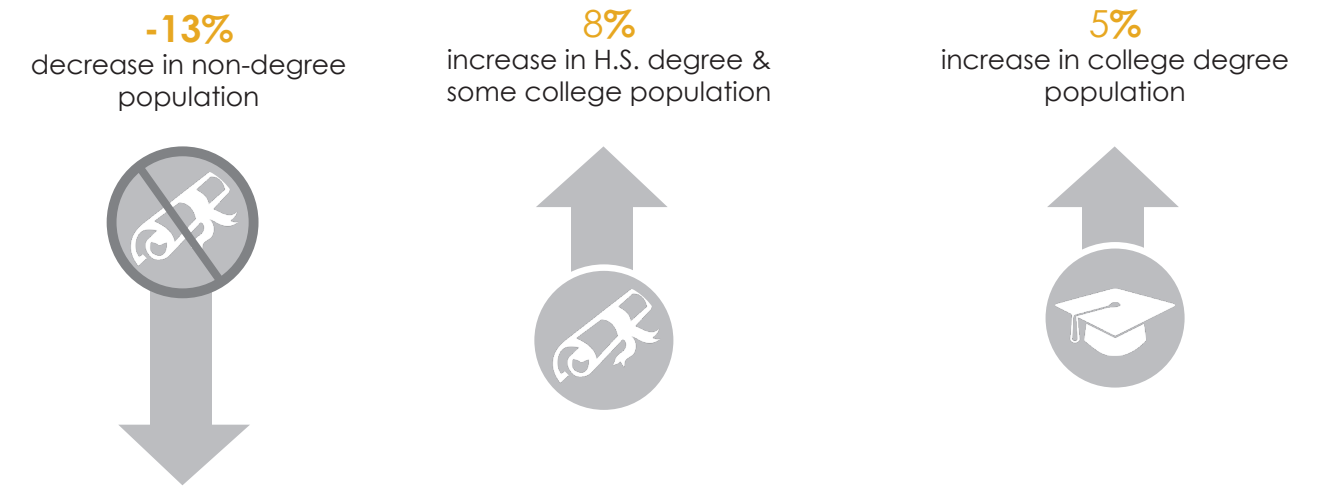
EDUCATION RING CITY COMPARISONS, % OF 25 YRS & OLDER [2017]

Source: American Community Survey 2013-2017



TREND OF EDUCATION ATTAINMENT ROCK HILL, [NET CHANGE 2000 - 2017, % OF 25 YRS.+ POPULATION]

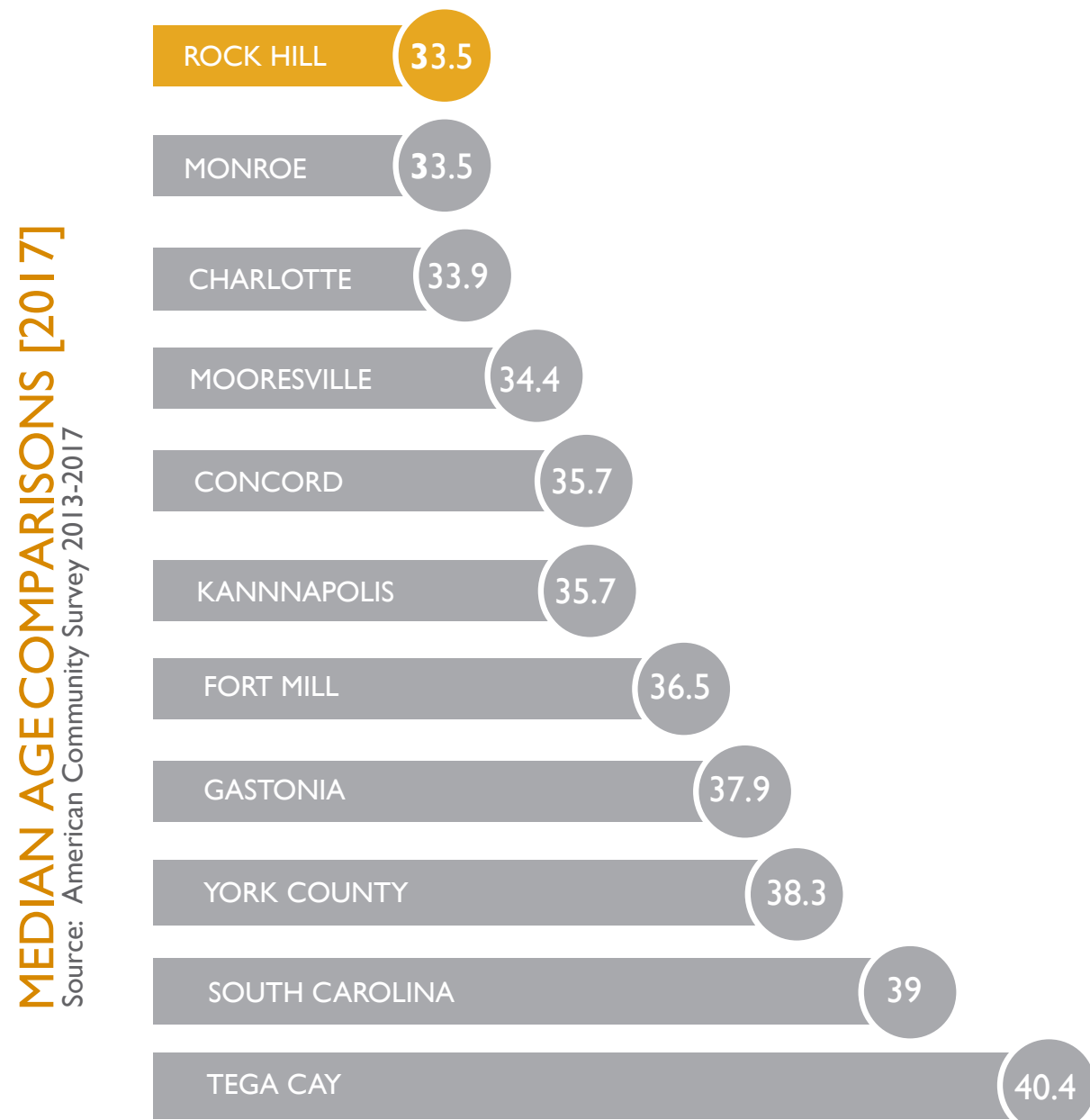
Source: US Census Bureau 2000, American Community Survey 2013-2017



	Rock Hill	Gastonia	Kannapolis	Concord	Mooresville	Monroe
No High School Degree	-13%	-13%	-15%	-10%	-10%	-10%
High School Graduate or Some College (includes equivalency)	8%	9%	5%	-2%	-5%	10%
Bachelor's Degree & Higher	5%	2%	9%	11%	15%	0%

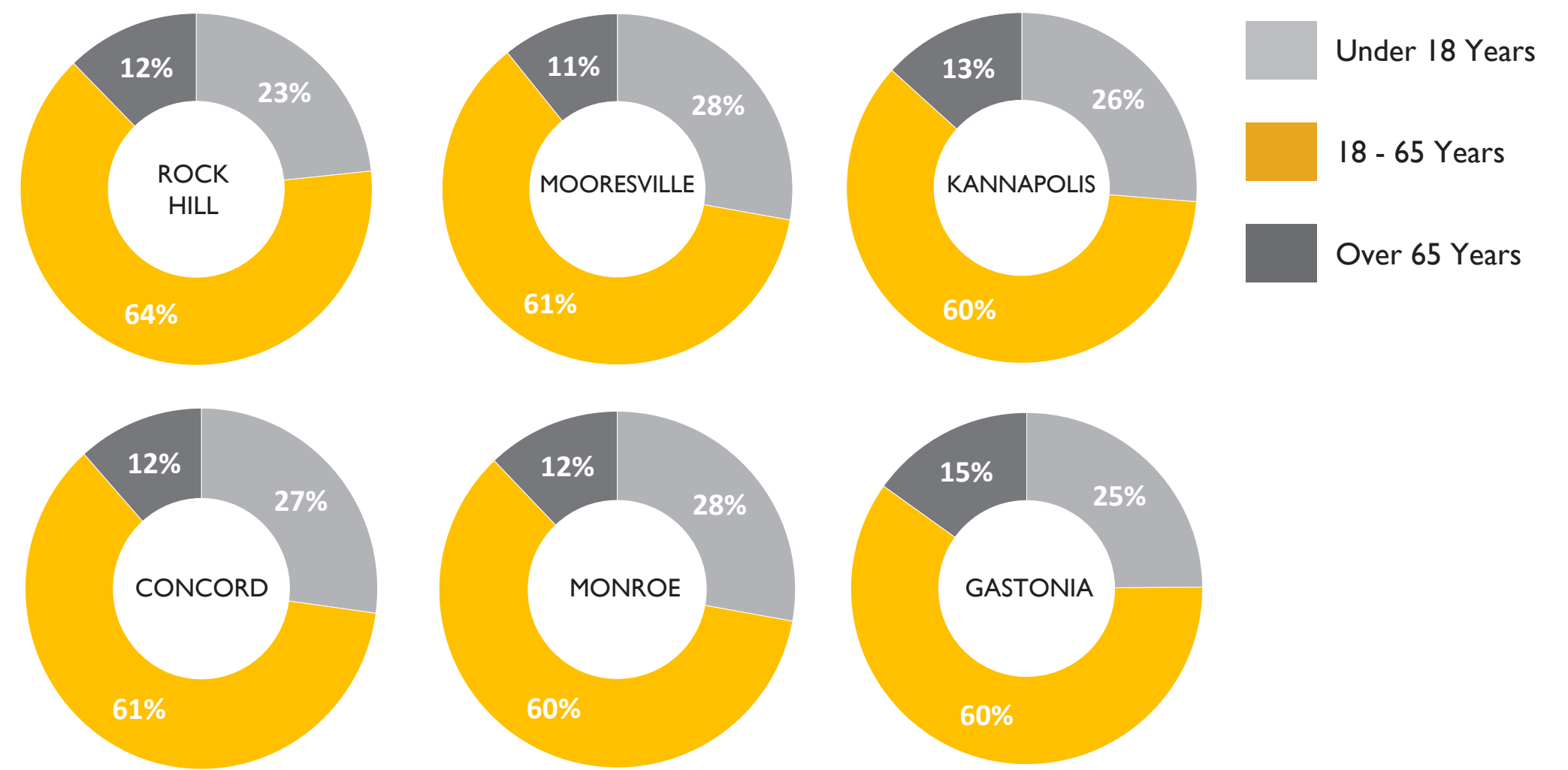
Age

Despite a national aging demographic trend, Rock Hill continues to have one of the youngest populations among the ring cities. With a median age of 33.5 years, Rock Hill is more representative of the City of Charlotte (33.9 years) than to York County (38.3 years) or the State (39 years). Rock Hill's distribution of age groups is well balanced between those under 18, the workforce (18-65 years) and those 65+ years of age. Other than Charlotte, Rock Hill has the largest percentage of its population in the workforce age group,



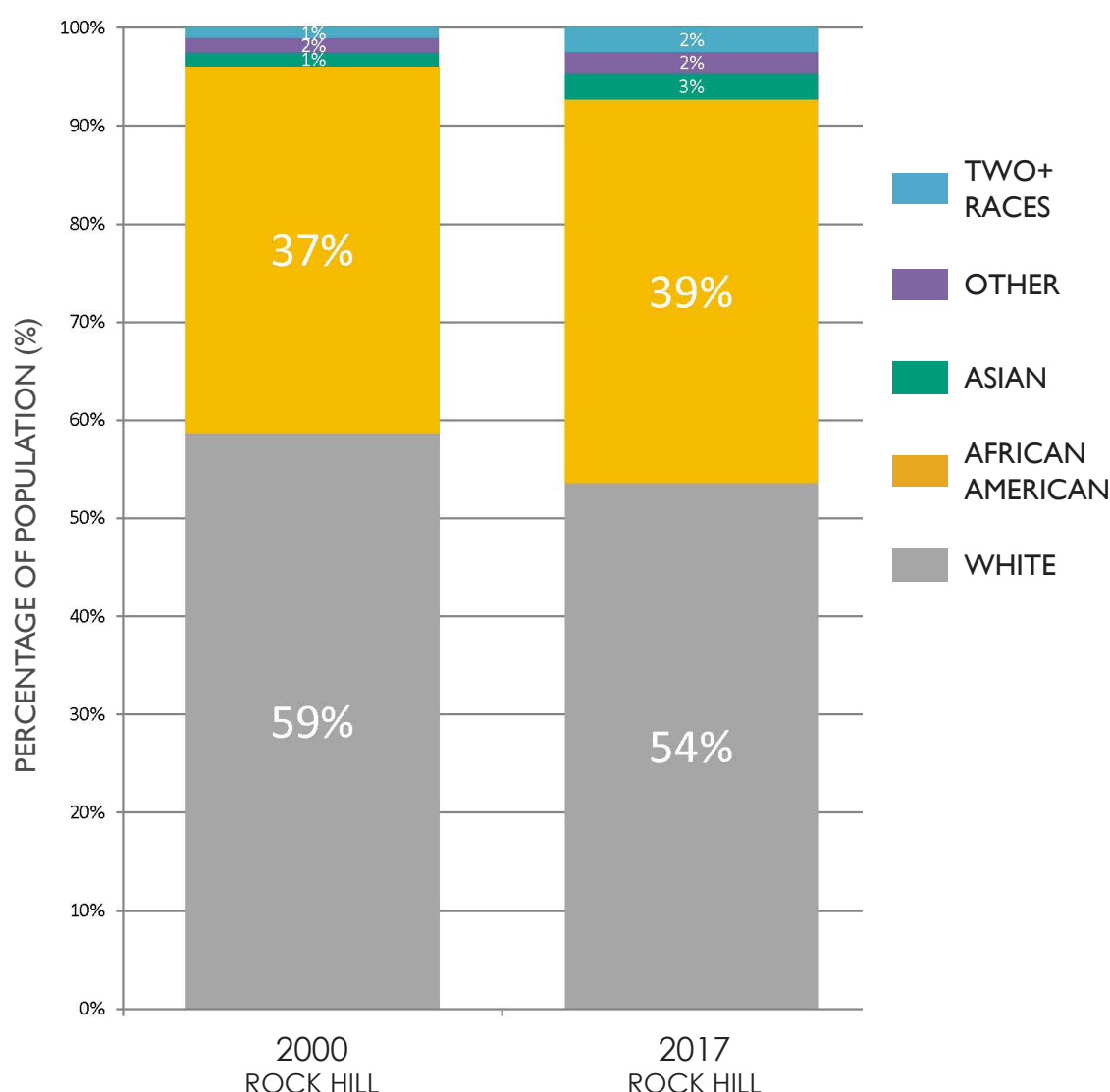
DISTRIBUTION OF AGE GROUP RING CITY COMPARISONS, % [2017]

Source: American Community Survey 2013-2017



Diversity

Like most communities across the United States, Rock Hill's population is becoming more diverse, experiencing a 5% decrease in the white population since 2000. Of the ring cities around Charlotte, Rock Hill has the smallest percentage of white population (54%) and the largest percentage of African Americans (39%). In terms of racial diversity, Rock Hill is more like Charlotte than any other ring city. However, in terms of ethnicity, Rock Hill has the lowest percentage of Hispanic population despite a 3% increase from 2000 to 2017.



RACIAL GROUP COMPARISONS, % [2017]

Source: American Community Survey 2013-2017

	White	African American	Asian	Other	Two+ Races
Rock Hill	54%	39%	3%	2%	2%
Charlotte	50%	35%	6%	6%	3%
Gastonia	63%	28%	2%	4%	3%
Monroe	65%	25%	1%	7%	2%
Kannapolis	67%	22%	2%	7%	2%
Concord	67%	21%	4%	5%	2%
Mooresville	80%	10%	6%	2%	2%

ETHNICITY COMPARISONS, % [2017]

Source: American Community Survey 2013-2017

	Hispanic	Non-Hispanic
Rock Hill	5%	95%
Mooresville	9%	91%
Gastonia	10%	90%
Concord	13%	87%
Charlotte	14%	86%
Kannapolis	14%	86%
Monroe	30%	70%